



In order to maintain high standards of cleanliness and hygiene, these facilities are checked regularly.

if additional attention is required, please contact a member of our cleaning team.



Digital Hygiene Monitors for Modern Facility Management

Wherever people go; work, education, retail, travel or leisure; a clean washroom is one of the strongest indicators of quality and care. Yet many facilities still rely on paper checklists pinned to the wall. These are often incomplete, inaccurate, and provide little accountability or insight into cleaning performance.

Grange Technologies Ltd offers a range of Digital Hygiene Monitors that replace outdated paper systems with smart, reliable auditing tools. From simple countdown displays showing time to the next clean, to our advanced Hygiene360 model with real-time alerts, customer feedback, and full digital audit trails, our solutions bring transparency and control to washroom management.

The result? Greater visitor confidence, improved compliance, and smarter use of cleaning resources through real-time data and footfall insights.



Real-Time Transparency

Digital audit trails with date, time, cleaner ID, and completed task verification.



Data-Driven Efficiency

Footfall tracking, live alerts, and customer feedback to optimise cleaning schedules.



Visible Assurance

Clear countdown displays that demonstrate proactive hygiene management.

What are Hygiene Monitors

We operate in a fast-moving world driven by advancing technology, yet many scheduled cleaning areas, such as washrooms, still rely on pen-and-paper auditing. This outdated approach is inefficient, unreliable, and unsustainable.

Hygiene Monitors provide a smart, digital solution for displaying and tracking cleaning activity, while ensuring compliance with cleaning schedules and procedures. Our range of solutions starts with simple visual monitors that display a countdown to the next scheduled clean. At the advanced end, we offer smart monitors with real-time issue alerts, user feedback capture, footfall analytics, and comprehensive audit trails for fully customised cleaning schedules and task management, along with many other powerful features.

Our systems range from battery-powered units using bespoke electronics with manual data extraction, to fully connected mains powered smart monitors that operate via an application and communicate directly with an online portal through Wi-Fi or cellular connectivity.

In today's environment, data is a valuable asset. Our monitors transform cleaning operations into measurable, actionable insights, delivering real value to facilities management across all industries.





How do our monitors add value to your business?

Recent studies show that clean, high-quality washrooms and access to good coffee are top priorities for travellers, directly influencing satisfaction, comfort, and repeat visits. Cleanliness now ranks above cost as the most important factor.

Our monitors capture real-time data on cleaning activity and progress, promoting accountability and punctuality while helping to keep washrooms in top condition.

If an issue arises between scheduled cleans, Hygiene360 enables users to report problems instantly, allowing urgent matters to be addressed quickly and reducing negative experiences.

All monitors can also track footfall. This data supports smarter scheduling by identifying peak times and busiest locations, ensuring cleaning resources are deployed efficiently where and when they're needed most. Footfall limits can also be set to trigger alerts when additional cleaning may be required.

By providing actionable insights, our monitoring system empowers Facility Management to make informed decisions and consistently maintain high standards and user satisfaction.

Hygiene360 is our most advanced model, combining intelligent technology with fully customisable features via an intuitive online portal.

It enables seamless interaction between cleaners, maintenance teams, facilities managers, and washroom visitors. Real-time alerts and live data uploads provide actionable insights, helping you stay in complete control of your washroom facilities at all times.

Hygiene360 enhances accountability by supporting cleaners in delivering a consistently high and reliable standard of service. Comprehensive feedback and footfall analytics allow Facilities Teams to optimise cleaning schedules, ensuring efficiency while delivering the best possible user experience.

In addition, Hygiene360 helps track consumable usage, manage and monitor reported issues through to resolution, and offers the option to utilise the screen for internal communications or advertising.



The Hygiene360 Smart solution operates via an app on the cleaner's Android device. QR codes are placed in locations requiring task-led cleaning and auditing, allowing cleaners to quickly access site-specific information.

A key advantage of Hygiene360 Smart is that it uses the same portal as Hygiene360 Monitors, making it ideal for organisations that benefit from using both systems across different locations.

Cleaners can log the start and finish of each clean, capturing who cleaned the area, when, and for how long. They can also view and tick off predefined task lists for each location, creating a complete, time-stamped audit trail.

Photographic evidence can be uploaded using the device's camera, either as proof of task completion or to report issues requiring further attention. Images help maintenance teams assess problems emotely, potentially reducing unnecessary inspection visits.

Cleaners can view and update user, or staff-reported issues at any time, marking them as resolved when completed. Issues can also be reported in real time to the relevant department, enabling faster response times and reducing ongoing negative user experiences.

Through the portal, issues can be assigned to specific staff members, who receive instant notifications on their devices to prompt action.



The Hygiene Monitor Professional provides visible proof that your facilities are cared for, checked regularly, and maintained to the highest standards. By clearly displaying when the next clean is due, it builds immediate confidence with visitors and reinforces your commitment to hygiene excellence.

The Professional Monitor is a visual countdown clock designed to clearly show visitors when the next scheduled clean is due.

Once the cleaning team has completed their service, they simply reset the countdown timer using a magnet. This quick and easy process ensures the display accurately reflects the most recent clean.

By providing a visible indication of cleaning frequency, the Hygiene Monitor reassures visitors that washrooms are being checked regularly and maintained to a consistently high standard of hygiene and care.



In order to maintain high standards of cleanliness and hygiene, these facilities are checked regularly. If additional attention is required, please contact a member of our cleaning team.

 **GRANGE**
TECHNOLOGIES

 **GRANGE**
TECHNOLOGIES



The Hygiene Monitor Professional Plus enhances the Professional model with advanced cleaning data capture, giving you greater control and visibility over your washroom maintenance. It provides accurate, reliable records to support compliance, performance management, and operational efficiency.

The system securely stores details of who carried out each clean and the exact time it was completed. This information can be quickly extracted and uploaded to a PC, making reporting and analysis straightforward and efficient.

Optional footfall monitoring can be added to track washroom usage and identify peak periods, helping you schedule cleaning more effectively. Integrated customer feedback also provides valuable insight into user satisfaction and highlights areas that may need attention. By combining cleaning records, usage data, and feedback in one system, the Professional Plus supports a smarter, data-driven approach to maintaining consistently high hygiene standards.





Hygiene**360**lite
FULL CIRCLE MANAGEMENT

Hygiene360 Lite combines the trusted performance of our Hygiene Monitor range with the intelligent connectivity of the Hygiene360 platform. The result is a streamlined solution that delivers the full unctonality of the professional Plus model, enhanced with direct online data access.

Designed to eliminate manual data extraction, Hygiene360 Lite automatically pushes monitoring data to a secure online portal for instant review and analysis. This means less time handling data, fewer errors, and faster, more informed decision-making.

With Hygiene360 Lite, you get powerful hygiene monitoring made simpler, smarter, and more efficient.



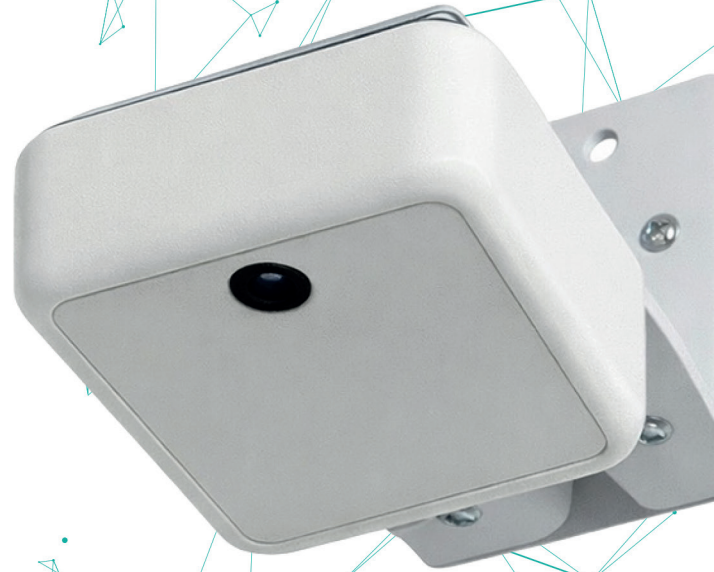


Footfall247
FOOTFALL COUNTING SOLUTIONS

Footfall247 is a powerful enhancement to our monitors, transforming raw visitor numbers into actionable insight that drives smarter cleaning decisions. By capturing and analysing usage patterns in real time, Footfall helps you optimise resources, improve hygiene standards, and respond proactively to demand, all while reducing unnecessary labour costs.

Footfall delivers an enormous amount of valuable data, particularly when planning and refining your cleaning schedule. By understanding visitor trends across specific days of the week and peak times of the day, managers can strategically design the most efficient cleaning routes to match real demand.

In addition, customisable footfall thresholds can be set to trigger automatic alerts when a washroom exceeds its usual visitor volume. This ensures high-traffic areas receive immediate attention, maintaining cleanliness standards and enhancing user satisfaction at all times.



Feedback 247 is a sleek, fully branded, free-standing feedback kiosk designed to capture real-time insights wherever your customers are. It turns everyday interactions into powerful data, helping you understand what truly matters to your visitors — so you can improve experiences, strengthen loyalty, and drive smarter business decisions.

Feedback 247 is an elegant, free-standing kiosk that makes gathering customer feedback simple, immediate, and effective. Designed to complement any environment, the device can be fully customised with your branding to create a seamless extension of your business.

By capturing instant feedback at the point of experience, Feedback 247 gives you clear insight into what your visitors appreciate and where improvements may be needed. This enables management to make informed, data-driven decisions, enhancing strengths, addressing concerns promptly, and continuously elevating the overall customer experience.



If you would like to learn more about how our products can support your operations, or to request a personalised live demonstration, our team would be delighted to assist you.

Contact us today to speak with one of our specialists and discover how Grange Technologies can help drive efficiency, performance, and results for your business.



 +44 (0)1277 354300
 +44 (0)7764 604444
 info@grange-tech.com
 grange-tech.com

